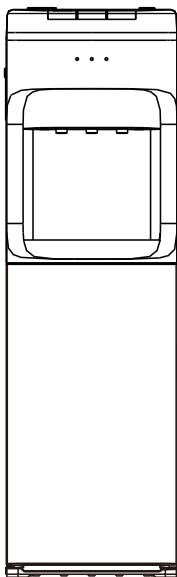


# **ZASS<sup>®</sup>**

*Worldwide comfort*



WATER DISPENSER

## **Instruction Manual**

Model: **ZWD 20 C** and **ZWD 22 C**



Sole importer in Romania:

ZASS Romania SRL (CUI RO15328988)

Ungheni nr. 40 A, cod 547605, Mureș

Telefon: 0265-262870, 0265-269209, Fax: 0265-307670

[www.zassromania.ro](http://www.zassromania.ro), e-mail: [office@zass.ro](mailto:office@zass.ro)



## A: SAFETY INSTRUCTION

### WARNING

To reduce risk of injury and property damage, user must read this entire guide before assembling, installing & operating dispenser.

**Failure to execute the instructions in this manual can cause personal injury or property damage. This product dispenses water at very high temperatures. Failure to use properly can cause personal injury. When operating this dispenser, always exercise basic safety precautions, including the following:**

- Prior to use, this dispenser must be properly assembled and installed in accordance with this manual.
- This dispenser is intended for water dispensing only. Do NOT use other liquids.
- Do NOT use for other purposes. Never use any other liquid in the dispenser other than known and microbiologically safe bottled water.
- For indoor use only. Keep water dispenser in a dry place away from direct sunlight. Do NOT use outdoors.
- Install and use only on a hard, flat and level surface.
- Do NOT place dispenser into an enclosed space or cabinet.
- Do NOT operate dispenser in the presence of explosive fumes.
- Position back of dispenser no closer than 20cm from wall and permit free airflow between wall and dispenser. There must be at least 20cm clearance on the sides of the dispenser to permit airflow.
- Use only properly grounded outlets.
- Do not use an extension cord with your water dispenser.
- Always grasp plug and pull straight out from outlet. Never unplug by pulling on power cord.
- Do NOT use dispenser if cord becomes frayed or otherwise damaged.
- To protect against electric shock, do NOT immerse cord, plug, or any other part of dispenser in water or other liquids.
- Ensure dispense is unplugged prior to cleaning.
- Never allow children to dispense hot water without proper and direct supervision. Unplug unit to prevent unsupervised use by children.
- Service should be performed only by a certified technician.
- Warning: Do not damage the refrigerant circuit.
- This appliance can be used by children aged from 8 years and above if they have been given supervision or instruction concerning use of the appliance in a safe way and if they understand the hazards involved. Cleaning and user maintenance shall not be made by children unless they are older than 8 and supervised. Keep the appliance and its cord out of reach of children aged less than 8 years.
- Appliances can be used by persons with reduced physical, sensory or mental capabilities or lack of experience and knowledge if they have been given supervision or instruction concerning use of the appliance in a safe way and understand the hazards involved.
- Children shall not play with the appliance.
- This appliance is intended to be used by expert or trained users in shops, in light industry and on farms, or for commercial use by lay persons.
- If the supply cord is damaged, it must be replaced by the manufacturer, its service agent or similarly qualified persons in order to avoid a hazard.
- The appliance must not be cleaned by a water jet.
- The appliance is suitable for indoor use only.
- WARNING: Keep ventilation openings, in the appliance enclosure or in the built-in structure, clear of obstruction.
- WARNING: Do not use mechanical devices or other means to accelerate the defrosting process, other than those recommended by the manufacturer.
- WARNING: When positioning the appliance, ensure the supply cord is not trapped or damaged.



- The appliance must not be immersed
- WARNING:** Do not locate multiple portable socket-outlets or portable power supplies at the rear of the appliance.
- It is recommended to use bottled pure water. If you use hard water, may lead to hot pot furring or detonation tank or pipeline risk. If you need cleaning tube, remove scale, need to find a professional institutions and professional operation.
- This product is not recommended to use in areas above 2,500m altitude.
- Do not store explosive substances such as aerosol cans with a flammable propellant in this appliance.
- This appliance should work under environment of temperature from 4~40°C humidity ≤90%.
- This appliance is not suitable for installation in an area where a water jet could be used.
- Never turn the machine upside down or lean it more than 45°.
- When the machine is under the ice point and blocked by ice, the cooling switch must be closed for 4 hours before turning it on again to continue its operation.
- This machine should not be turned on until 3 minutes later after turning off the power switch.

## B.GETTING STARTED

### Locate Dispenser

1. Place dispenser upright.
2. Locate dispenser on a hard and level surface in a cool shaded location near a grounded wall outlet.  
Notice: Do NOT plug in power cord yet.
3. Position dispenser so the back is at least 20cm from wall and there are at least 20cm of clearance on both sides.

### Install Water Bottle

1. Open dispenser door.
2. Place probe assembly on probe hanger.
3. Place fresh bottle outside of cabinet.
4. Remove entire plastic cap from top of bottle.
5. Clean outside of new bottle with a cloth.
6. Place probe into bottle.
7. Slide collar down until it clicks in place.
8. Push head down until tubes hit bottom of bottle.
9. Slide bottle into cabinet and close door.

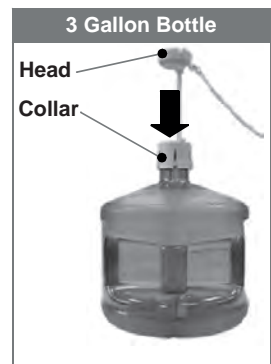
### Provide Electricity

Plug cord into a properly grounded wall outlet. At this time the pump will begin to move water from the bottle to the hot and cold tanks. It will take up to 12 minutes to fill the tanks for the first time. During this period the pump will run continuously. This is normal.

### Activate Heating & Cooling

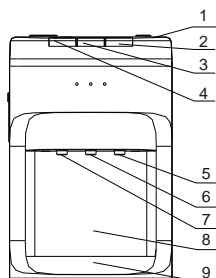
Notice: This unit will not dispense hot or cold water until the switches are activated. To activate, push top side of power switches in to start heating and cooling water. - If you do not want to heat water, push bottom side of red switch in. - If you do not want to cool water, push bottom side of green switch in.

Open the hot and cold water tap, then let the water flow through these taps to ventilate the internal water circuits of the device. Now you can turn on the switches for heating and/or cooling the water in the dispenser. For the ZWD 22 model, the orange switch (15) for starting the water pump will be engaged during the first commissioning. After making the level in the upper basin of the device, the water pump will stop and restart when the water level in the internal tank of the device drops. This switch will always have to remain on to maintain the water level in the device.

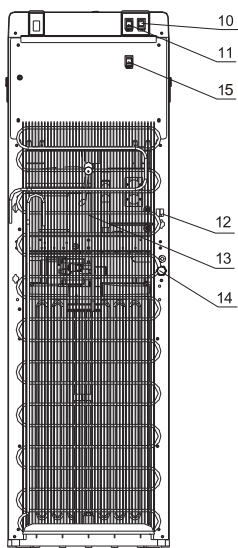




## C: PARTS NAME



(FRONT)



(REAR)

NO.	PART NAME	NO.	PART NAME
1	top cover	8	front carapace
2	push button of cold water	9	water collector
3	push button of normal water	10	heating switch
4	push button of hot water	11	cooling switch
5	tap of cold water	12	power cord
6	tap of normal water	13	condenser
7	tap of hot water	14	outlet of hot water
15	Water pump power switch (only for the ZWD 22 C model)		

### NOTE:

This machine is suitable for bottle of 3 or 5 gallons.  
Don't use unhealthy hard water.



## D. DISPENSING WATER

This unit has been tested and sanitized prior to packing and shipping. During transit dust and odors can accumulate in the tank and lines. Dispense and dispose at least one quart of water prior to drinking any water.

### Dispensing Cold Water

After setup, it will take up to 1 hour to get water to maximum cold temperature. During this time the compressor could run continuously. This is normal.

1. Position bottle, glass, pitcher or cooking pot below spout.
2. Depress cold water control downward to start cold water flow.
3. Release control once desired fill level is achieved.

### Dispensing Normal Water

1. Position bottle, glass, pitcher or cooking pot below spout.
2. Depress normal water control downward to start normal water flow.
3. Release control once desired fill level is achieved.

### Dispensing Hot Water

After setup, hot water will be available in 15-20 minutes.

1. Position bottle, glass, pitcher or cooking pot below spout.
2. Slide red button away from you and depress hot water control downward to start hot water flow.
3. Release control once desired fill level is achieved.

### Changing Bottles

A flashing red light on your function lights alerts you when your bottle is empty. Replace the bottle as soon as possible

Notice: Do not dispense hot or cold water if the red light is flashing as you could empty the tanks and cause the dispenser to overheat.

1. Open dispenser door.
2. Slide empty bottle out of cabinet.
3. Remove probe assembly from empty bottle. Place probe assembly on probe hanger.
4. Set empty bottle aside.
5. Place fresh bottle outside of cabinet. Remove entire plastic cap from top of bottle. Clean outside of new bottle with a cloth.
6. Place probe into bottle. Slide collar down until it clicks in place. Push head down until tubes hit bottom of bottle.
7. Slide bottle into cabinet and close door.

### Low water instructions (blue light, on ZWD 22 C model)

1. When there is enough water in the water tank of the appliance, the indicator will not light.
  2. When the water flows from the water tank of the appliance, the indicator will not light up and will sound a warning sound for 1 minute.
  3. When there is no water in the water tank, the indicator light will flash.
  4. When there is water in the tank, but there is no water in the water bottle, the indicator will light up and make a sound for 30 seconds.
  5. When there is no water in the tank and can, the appliance switches off, the indicator flashes and makes a sound for 30 seconds.
  6. When the lower compartment door opens, the water pump will stop.
- If the water level in the tank is high compared to the normal operating level, the appliance will operate normally.
7. After changing the canister and closing the bottom compartment door, the hot and cold water tank will fill with water and the indicator light will go out.



## E: TROUBLE SHOOTING

### Water is leaking.

- Unplug dispenser, remove bottle and replace it.
- No Water is coming from the spout.
- Make sure the bottle is not empty. If empty, replace it.
- Make sure to completely depress the pushbutton controls.

### Cold water is not cold.

- It takes up to one hour after setup to dispense cold water.
- Make sure the power cord is properly connected to a working outlet.
- Make sure the back of the dispenser is at least 20cm from a wall and there is free airflow on all 20cm sides of the dispenser.
- Make sure green power switch on back of dispenser is ON.
- If water still isn't cold, please ask for the service agent for assistance.

### Hot water is not hot.

- It takes 15-20 minutes after setup to dispense hot water.
- Make sure the power cord is properly connected to a working outlet.
- Make sure red power switch on back of dispenser is ON.

### Dispenser Is Noisy

- Make sure the dispenser is positioned on a level surface.

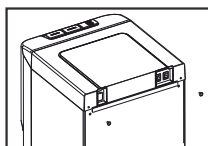
## F: CLEANING

**To avoid accident, cut off the power supply before operation according to the following instruction.**

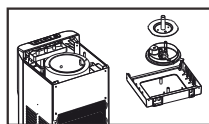
1. The machine had been disinfected before departed from factory.  
Cleaning the dispenser prior to install a full bottle of water for the first time.
2. Cleaning and draining instruction:
  - a) Before cleaning, make sure the power switch in the O(off) position and unplug the water dispenser.
  - b) Twist out the two screws①, then take down top cover, cold tank cover and separator②.
  - c) Fill 0.6 gallons pure water into cold tank to clean it.
  - d) Place a large water bucket beneath the drain outlet which on the back of water dispenser, then remove the drain cover and drain the water③.
  - e) Reposition the drain cover, separator, cold tank cover and top cover after draining. Ensure the pipe and wires are connected properly , then, you can use the machine normally.

**Attention:** 1) The cleaning must be under the guidance of professional staff.

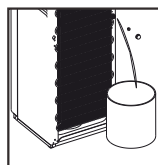
- 2)The dispenser heats water to a temperature of approximately 85℃. It can cause severe burns. Please operate it carefully.



①



②



③



### 3. Sanitizing

The machine should be disinfected with the disinfectant separately bought from drugstore or marketplace according to the instruction manual of the disinfectant and then clean it with water (see cleaning and draining instruction). Generally this should be done every three months.

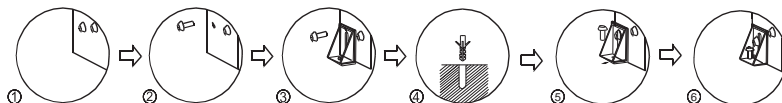
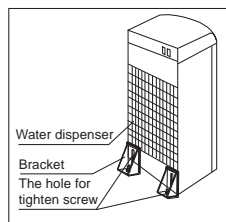
### 4. To remove mineral deposits:

Mix 4 liters water with 200g citric acid crystals, inject into the machine and make sure the water can flow out of the hot water tap. Switch on the power and heat it about 10 minutes, 30 minutes later, drain off the liquid and clean it with water for two or three times. Generally this should be done every six months.

Never disassemble this machine by yourself to avoid danger from damaged machine.

## G: MACHINE INSTALLATION

- 1-2. Loosen the screw of the left or right bottom angle just as the picture shown.
3. Use the screw to fix the bracket on the left or right bottom angle of the water dispenser.
4. Make a hole on the floor's or the desk's surface where the water dispenser will be installed.
5. Fix the bracket on the floor by screw tightly.
6. Tighten the screw.



**WARNING!** To avoid a hazard due to instability of the appliance, it must be fixed in accordance with the instructions.

The packaging material used is recyclable; we recommend that you separate plastic, paper and cardboard and hand them over to recycling companies. To help preserve the environment, the refrigerant used in this product is R134a (Hydrofluorocarbon-HFC), which does not affect the ozone layer and has a low impact on the greenhouse effect.



IMPORTANT INFORMATION ON THE CORRECT DISPOSAL OF THE PRODUCT IN ACCORDANCE WITH EC DIRECTIVE 2012/19 / EU

Used electrical appliances are valuable materials, which is why their place is not in the garbage! Therefore, please support us and participate in the protection of natural resources and the environment by handing this device over to the collection centers or to the importer whose address you can find in this manual or in the warranty certificate. By removing household appliances separately, you will avoid any negative consequences that incorrect disposal could have on the environment and health, and you will allow the use of constituent materials to save energy and resources. Additional details can be requested from the local administration or at the nearest collection point. Improper disposal of waste may, in accordance with national regulations, be amended. Separate decommissioning of an appliance is specified by marking the product with the image of a cut bin.



This product does not contain environmentally hazardous materials (lead, mercury, cadmium, hexavalent chromium and brominated flammable agents: PBB and PBDE).



We assume the right to make changes to these provisions without further notice.

SC ZASS ROMANIA S.R.L. is not responsible for any typographical errors, images or product characteristics.

**ZASS®**  
*Worldwide comfort*  
www.zassromania.ro